

**GREEN AUDIT REPORT**  
**2019-2020**  
**25/November/2019**



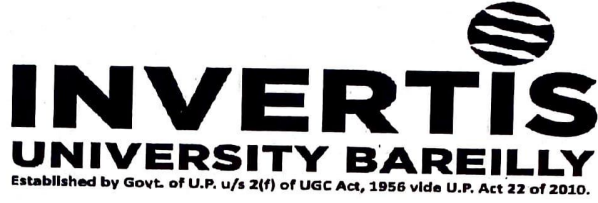
**INVERTIS**  
**UNIVERSITY BAREILLY**

Established by Govt. of U.P. u/s 2(f) of UGC Act, 1956 vide U.P. Act 22 of 2010.

**Invertis University**  
**Bareilly-Lucknow National Highway, NH-24, Bareilly,**  
**Uttar Pradesh 243123**

Director Administration  
Invertis University  
Bareilly

Registrar  
Invertis University  
Bareilly



**Invertis University**  
**Bareilly-Lucknow National Highway, NH-24, Bareilly,**  
**Uttar Pradesh 243123**

### GREEN AUDIT ASSESSMENT TEAM

Sr. No.	Constitution		Designation
1	Sh. L. P. Mishra	Director Administration, Invertis University	Chairman
2	Mr. Anil pandey	Assistant Professor, Department of computer Science, Invertis University	Co-ordinator (IQAC)
3	Mr. Amritansh Mishra	Assistant Professor, Dept. of Professional Communication, Invertis University	Co-ordinator Audit Assessment Team
4	Dr. Mudita Verma	Assistant Professor, Department of Agriculture	Member
5	Ms. Pankaj Rai	Assistant Professor, Department of Biotechnology	Member
6	Dr. Himanshu Joshi	HOD, Department of Pharmaceuticals	Member
7	Dr. Surya Pratap Gautam	Assistant Professor, Department of Applied Science and Humanities	Member
8	Mr. Kedar	Warden, Boys Hostel	Member


  
Director Administration  
Invertis University  
Bareilly

  
Registrar  
Invertis University  
Bareilly

## Content

Sr. No.	Titles
1	Introduction
2	Objectives of Green Audit
3	Green Auditing Methodology
4	Steps of Green Audit
5	Geographical Location of Invertis University
6	Tree Diversity of Invertis University
7	Faunal Diversity
8	Major Findings
9	Recommendations

  
Director Administration  
Invertis University  
Bareilly

  
Registrar  
Invertis University  
Bareilly

## 1. INTRODUCTION

Green Audit is a procedure of methodical recognizable proof, evaluation, recording, reporting and investigation of parts of ecological assorted variety of different foundations. It intends to investigate ecological practices inside and outside of the concerned parts, which will affect the eco-accommodating climate.

It has been observed that green review can be a helpful device for a university to decide how and where they are utilizing the most vitality or water or assets; the university would then be able to consider how to execute changes and make reserve funds. It can likewise be utilized to decide the sort and volume of waste, which can be utilized for a reusing venture or to improve squander minimization plan. It can make wellbeing cognizance and advance ecological mindfulness, qualities and morals. It gives faculties and students better comprehension of Green effect nearby.

If self-enquiry is a characteristic and essential outgrowth of quality instruction, it could likewise be expressed that institutional self-enquiry is a characteristic and vital outgrowth of a quality instructive organization. In this manner it is basic that the university assesses its own commitments toward a maintainable future. As natural maintainability is turning into an undeniably significant issue for the country, the job of higher instructive establishments corresponding to ecological manageability is progressively common.

The fast urbanization and monetary advancement at neighborhood, local and worldwide level has prompted a few natural and biological emergencies. On this foundation it gets fundamental to embrace the arrangement of the Green Campus for the organizations which will lead for supportable turn of events and simultaneously diminish a sizable measure of air carbon-di-oxide from nature. The

National Assessment and Accreditation Council, New Delhi (NAAC) has made it

Director Administration  
Invertis University  
Bareilly

Registrar  
Invertis University  
Bareilly

obligatory that all Higher Educational Institutions ought to present a yearly Green Audit Report.

For the sake of our environment it is essential for the Higher Educational Institutions to guarantee that they contribute towards the decrease of a global warming thereby creating a healthy environment.

## 2. OBJECTIVES OF GREEN AUDIT

The current scenario lay emphasis on green management practices thereby the Green Audit of a university has become prime importance of the time.

It has been turning into a central significant for self-appraisal of the university which mirrors the role of the establishment in moderating the present ecological issues.

Invertis University has been investing amounts of energy to keep our condition clean since its commencement. The objective of the University for the Green Audit Process is to recognize, evaluate, portray and organize structure of Environment Sustainability in consistence with the relevant guidelines, strategies and measures.

The fundamental goals of doing Green Audit are:

- To promote greenery and promote monitoring of the related activities by introducing well planned practices.
- To document the ambient environmental condition of air, water and noise of the university.
- To report the flower and faunal assorted variety of the university.
- To acquaint faculties and staffs with genuine worries of condition and its maintainability.
- Framing environmental policies for plantation on a regular basis to provide healthily environment for everyone.

  
Director Administration  
Invertis University  
Bareilly

  
Registrar  
Invertis University  
Bareilly

### 3 GREEN AUDIT METHODOLOGY

The reason for the green audit process of Invertis University is to guarantee that the practices that are followed are as per the Green Policy received by the organization.

Green audit methodology include: readiness and topping off of survey, physical examination of the grounds, perception and audit of the documentation, talking with key people and information investigation, estimations and proposals.

### 4. STEPS OF GREEN AUDIT

Invertis University recognized the fact that conducting a green audit is one of the important steps towards making our environment eco-friendly. Thereby the process of green audit is conducted in different steps i.e. pre-audit and post-audit so that the data recorded in the whole process can be utilized later for better and improved outcome.

A team is selected for the purpose of auditing so as to introspect the campus and create the report as per the objectives.

In the process of pre-auditing a raw data is collected by the team members on different practices that come under this process. Once the data is collected a final report is made that underlines all the measures taken by the university to create healthy environment. Apart from this the practices for further action for improvement are highlighted and implemented later.

#### PRE-AUDIT

- Planning of the green- audit.
- Selecting the team for the audit- process.
- Scheduling the facilities to be used for the report.
- Collecting available information so as to use it for further compliance of the data.
- Defining and mentioning major parts of the campus for the audit survey.

  
Director Administration  
Invertis University  
Dareilly

  
Registrar  
Invertis University  
Dareilly

## POST- AUDIT

- Compiling the data in order to produce a draft report.
- Re-examining of the data collected for the final report.
- Preparing an action plan based on the outcome, where there is a need for improvement.
- Implementing strategies for further action plan based on the final report of green audit.

## 5. GEOGRAPHICAL LOCATION OF INVERTIS UNIVERSITY

Invertis University is situated on Bareilly-Lucknow NH-24, equidistant from the national capital Delhi and state capital Lucknow. It is situated within the geosition between latitude  $28.2923317^{\circ}$  N and longitude  $79.4915667^{\circ}$  E in Bareilly, Uttar Pradesh India. The campus is just 12km away from the Bareilly Railway Station and Roadways Bus Stand equally. The campus has built over an area of 23.5 acres of land.

## 6. TREE DIVERSITY OF INVERTIS UNIVERSITY

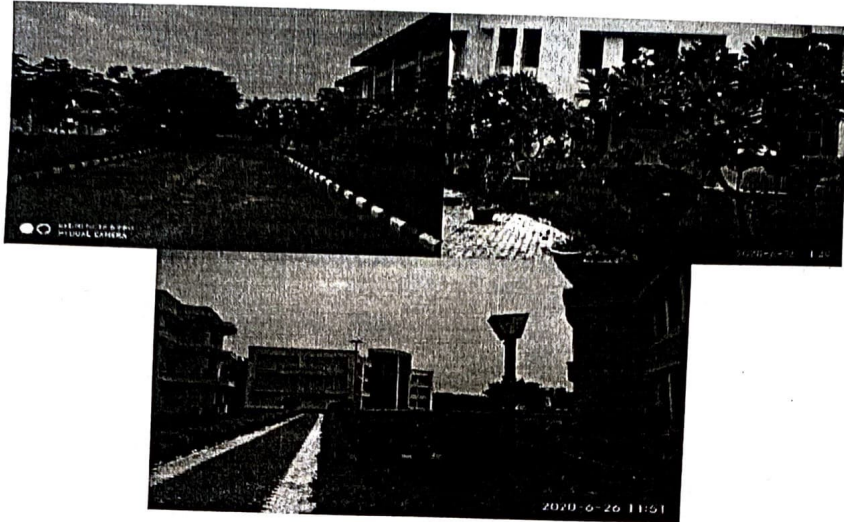
Invertis University is situated in the outskirts of the town surrounded with greenery. The campus has diverse variety of tree categories playing significant role in making the environment clean.

After and adequate collection of data it was found that the campus is home to numerous varieties of trees and plants.

The Responsible Invertian club ensures the regular plantation and monitoring of plants with the help of the Department of agriculture and committed to plant 500-600 trees every year.

  
Director Administration  
Invertis University  
Bareilly

  
Registrar  
Invertis University  
Bareilly



The tree species are planted in various timeframes through different estate programs sorted out by the power and have become a vital piece of the university. The trees of the university have expanded the quality of life, not only within the campus but also for the people around the campus as it has added to our condition by giving oxygen, improving air quality, atmosphere improvement, preservation of water, protecting soil, and supporting natural life, controlling atmosphere by directing the impacts of the sun, rain and wind.

These trees absorb and channel the sun's brilliant vitality, keeping surroundings cool in summer. Numerous species of birds are reliant on these trees mostly for food and shelter.

Trees not only create a healthy environment but also help in completing the food chains. They play numerous roles thereby balancing the ecology. The nectar of blossoms and plants is fed by birds and insects. Leaf – secured branches keep numerous animals, for example, feathered creatures and squirrels, far from predators.

Various species show an apparently perpetual assortment of shapes, structures, surface and lively hues. Indeed, even individual trees differ their appearance over the span of the year as the seasons change. The quality, long life expectancy and superb height of trees give them a landmark – like quality.

Director Administration  
Inveris University  
Carrilly

Registrar  
Inveris University  
Carrilly



A thick belt of huge obscure trees in the outskirts of the university have seen as cutting down dust and storms.

## 7. FAUNAL DIVERSITY

Invertis University is located in Bareilly, Uttar Pradesh. The city is on the Ramganga, with seven other rivers passing through the district. The lower Himalayas are 40 kilometres (25 mi) north of the river. The city has a humid subtropical climate with hot summers and cool winters. The average temperature for the year is 25 °C. June, with an average temperature of 32.8 °C is the warmest month, while the coolest month of the year is January, with an average temperature of 15 °C. It receives 1038.9 mm precipitation for the year on average. The month with the most precipitation on average is July with 307.3 mm of precipitation, while November is the month with the least precipitation on average, with an average of 5.1 mm. The summer is noticeably wetter than the winter, although rain falls throughout the year.

The climatic state of the Bareilly area and Invertis University specifically is entirely reasonable for a wide variety of flora and fauna to help its rich biodiversity.



  
Director Administration  
Invertis University  
Bareilly

Registrar  
Invertis University  
Bareilly

During the green audit the faunal diversity of the university was studied and was founded that the campus is the home to numerous birds and animals. Insects like spiders, bugs, butterflies and moths, dragonflies etc feed on the variety of fauna. The diversity also includes birds like pigeons, doves, peacocks, woodpeckers, cranes etc.

## 8. MAJOR FINDINGS:

The Green Auditing of Invertis University led to various findings that can further be carried out to lay more emphasis on the aspects to be improved.

- It was found that the campus is home to various assortments of trees and plants.
- The trees in the university have added to our condition by giving oxygen, improving air quality, air improvement, safeguarding of water, ensuring soil, and supporting regular life.
- The campus is furnished with sufficient water supplies in order to irrigate the fields.
- Sprinkler water tubes are additionally kept up in order to equally water all the green fields.
- It was additionally found that Invertis University is home to faunal diversity due to the variety of trees that are a home to various flying creatures.

## 9. RECOMMENDATIONS:

On the basis of the Green Audit report following points can be recommended for further improvement:

- More plants need to be planted that are essential for purifying the air.
- Though there are hundreds of trees, there is a need to focus on planting medicinal plants more.
- More indoor plants like snake plants, areca palm, bamboo palm, croton etc. can be placed inside the buildings also as they are capable of filtering

Director Administration  
Invertis University  
Gareilly

Registrar  
Invertis University  
Gareilly

harmful toxins and pollutants from the air within our most occupied indoor spaces.

- More water supplies need to be equipped in the playing area so as to effectively irrigate the fields.
- We need to implement green cleaning, pest control, and maintenance policies for a healthy and non-toxic environment. The campus can be outfitted with air quality meters that will check any serious air quality Issues, such as high CO2 levels, etc.

  
Director Administration  
Inveris University  
Bareilly

  
Registrar  
Inveris University  
Bareilly